

### Cutting Instructions

Bag body - cut 1, 27' x 36"

End pieces - cut 2, each 12 ½ " x 12 ½ "

Gussets - cut 2, each 6 ½' x 27'

Pocket - cut 1, 9" x 10"

Strapping - cut 1, 3 ½ Yards long.

### Serging Instructions

Serge Bag Body, Gussets, and Pocket, trimming off as little fabric as possible.

### Prepare Zipper

Attach a zipper pull to zipper tape. With zipper pull on the tape, cut zipper tape to 30" long. Sew several times ¼" from each end to create a new zipper stop and secure the zipper pull.

### Prepare Strap

Zigzag the strap ends together to form a circle. Be sure not to twist the strap.

**NOTE:** All the above steps should be completed in a kit.

### Assembly Instructions

#### Label:

Center the label on one of the end pieces and sew around all four sides. Attach pocket to the other side of **this** end piece. The label and pocket are on the same end piece, just on opposite sides. The pocket will go on the **OUTSIDE** of the bag and the label will go on the **INSIDE**.





**Pocket:**

Fold under  $\frac{1}{2}$ " on both 10" sides, press. Fold under 1" one of the 9" sides, press. The pocket should now be 8" wide by 9" tall.

Stitch  $\frac{3}{4}$ " from top edge, securing the 1" fold, and catching the side folds in the stitching.

Center a piece of Velcro on the wrong side of the 1" fold, stitch in place.

Place other piece of Velcro on one end piece and center it between sides, stitch in place. Stick Velcro pieces together. Stitch the second Velcro piece to the end piece so that the pocket is centered on the end piece and bottom edges of pocket and end piece meet.

Stitch close to the edge of both sides of the pocket, adding a reinforcement triangle to the top.

**HINT:** At the bottom of the pocket and end piece, find the center. This will make it easier to center the pocket on the end piece.

**View of the outside of the pocket**



**Zipper and Gussets:**

Place zipper on the long side of one gusset, aligning zipper tape with long edge, right sides together. Zipper is longer than gusset.



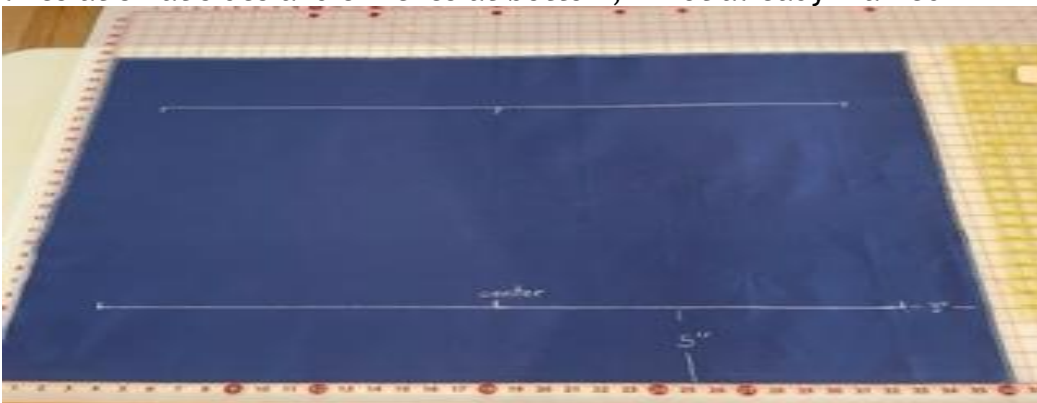
Sew ¼” seam. Turn the zipper and gusset face up, pressing seam away from zipper. Topstitch along fold.



Repeat with the second side of zipper and the second gusset. Trim zipper tape even with the sides of gusset

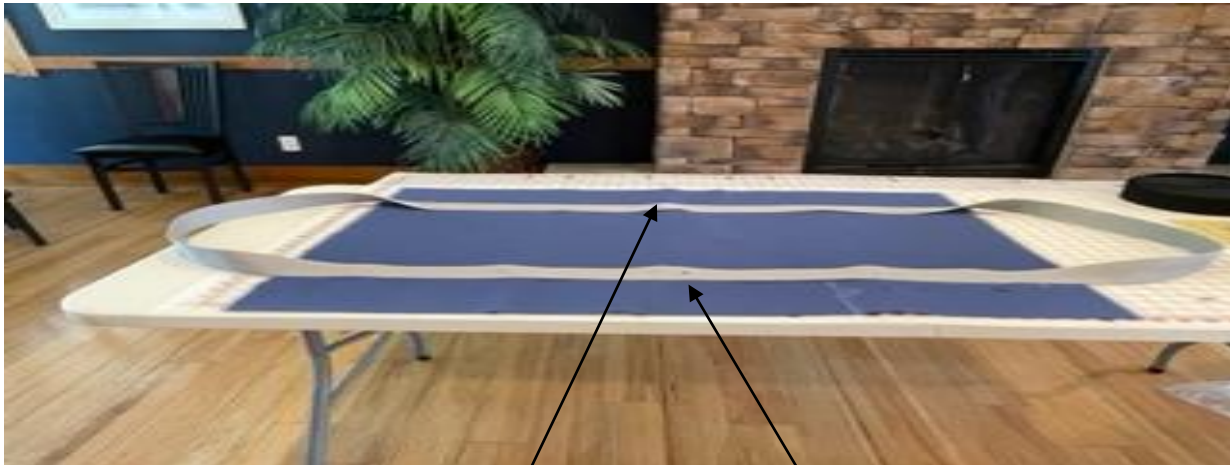


**Attach Straps:** Lay the material out, mark at 18 inches and using 6/x24 ruler and marker, draw lines at 5” at sides and 3 inches at bottom, if not already marked



Fold strap in half, mark halfway point with pin or marker. Line up strap inside the 5 inch line starting and ending 3” from bag ends.

Position the seam on one end and the middle of the loop on the other end.

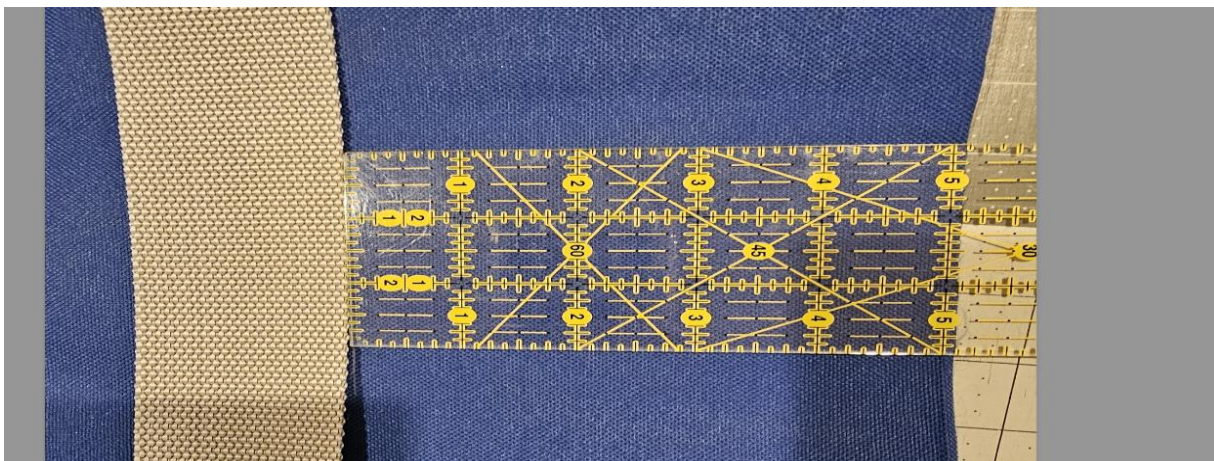


Seam joint

Middle of the loop

Secure strap to bag with fabric glue, double sided tape or use a ruler to keep it straight while you sew it in place.

Place a 2 inch box with X in it on all 4 sides. Starting at the 3 inch mark for starting and ending the strap placement at the ends of the body of the bag.



### Sew Ends onto Gusset:

Sew the end pieces of the duffle bag to each end of the zipper gusset.



Attach Gussets and Body:

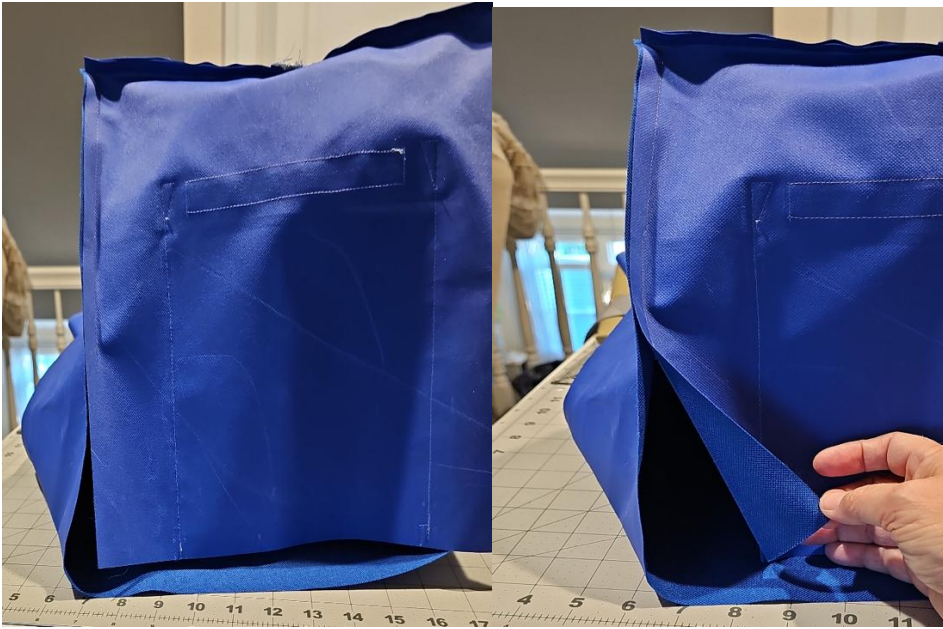
Sew bag body to gussets, right sides together. Sew with a ½” seam. Be sure not to catch straps in these seams.



Attach Ends to the Body:

**IMPORTANT: Make sure the zipper is open.**

Sew with a ½” seam down the sides of each end about 3/4 of the way. Work in the remaining bottom easing the excess at the corners.



Repeat with the other bag end.

Turn the bag right side out and admire your work!

Thank you for all you do for foster children!

